

Electrical resistivity survey address:

Scanning range: 150m

Point 1: Water from 58.3m to 125.0m (Range: 66.7m)
Point 2: Water from 66.7m to 120.8m (Range: 54.2m)
Point 3: Water from 58.3m to 112.5m (Range: 54.2m)
Point 4: Water from 58.3m to 116.7m (Range: 58.3m)
Point 5: Water from 58.3m to 116.7m (Range: 58.3m)
Point 6: Water from 58.3m to 116.7m (Range: 58.3m)
Point 7: Water from 62.5m to 116.7m (Range: 54.2m)
Point 8: Water from 62.5m to 112.5m (Range: 50.0m)
Point 9: Water from 8.3m to 120.8m (Range: 112.5m)
Point 10: Water from 75.0m to 112.5m (Range: 37.5m)
Point 11: Water from 70.8m to 112.5m (Range: 41.7m)
Point 12: Water from 66.7m to 112.5m (Range: 45.8m)
Point 13: Water from 70.8m to 108.3m (Range: 37.5m)
Point 14: Water from 75.0m to 100.0m (Range: 25.0m)
Point 15: No water found
Point 16: Water from 83.3m to 100.0m (Range: 16.7m)
Point 17: Water from 75.0m to 108.3m (Range: 33.3m)
Point 18: Water from 91.7m to 95.8m (Range: 4.2m)
Point 19: No water found

Best drilling location:

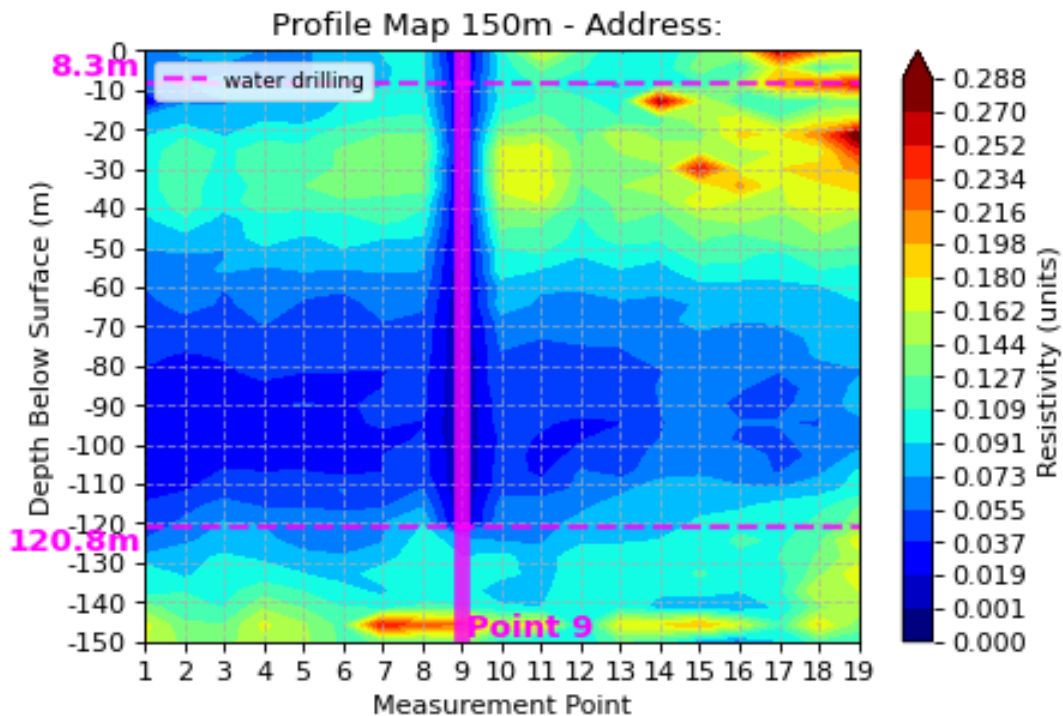
Point 9: with water from 8.3m to 120.8m (Range: 112.5m, Average resistivity: 0.001)

Second best drilling location:

Point 1: with water from 58.3m to 125.0m (Range: 66.7m, Average resistivity: 0.038)

Third best drilling location:

Point 5: with water from 58.3m to 116.7m (Range: 58.3m, Average resistivity: 0.041)



Resistivity Curve - Address: (Max Depth: 150m)

